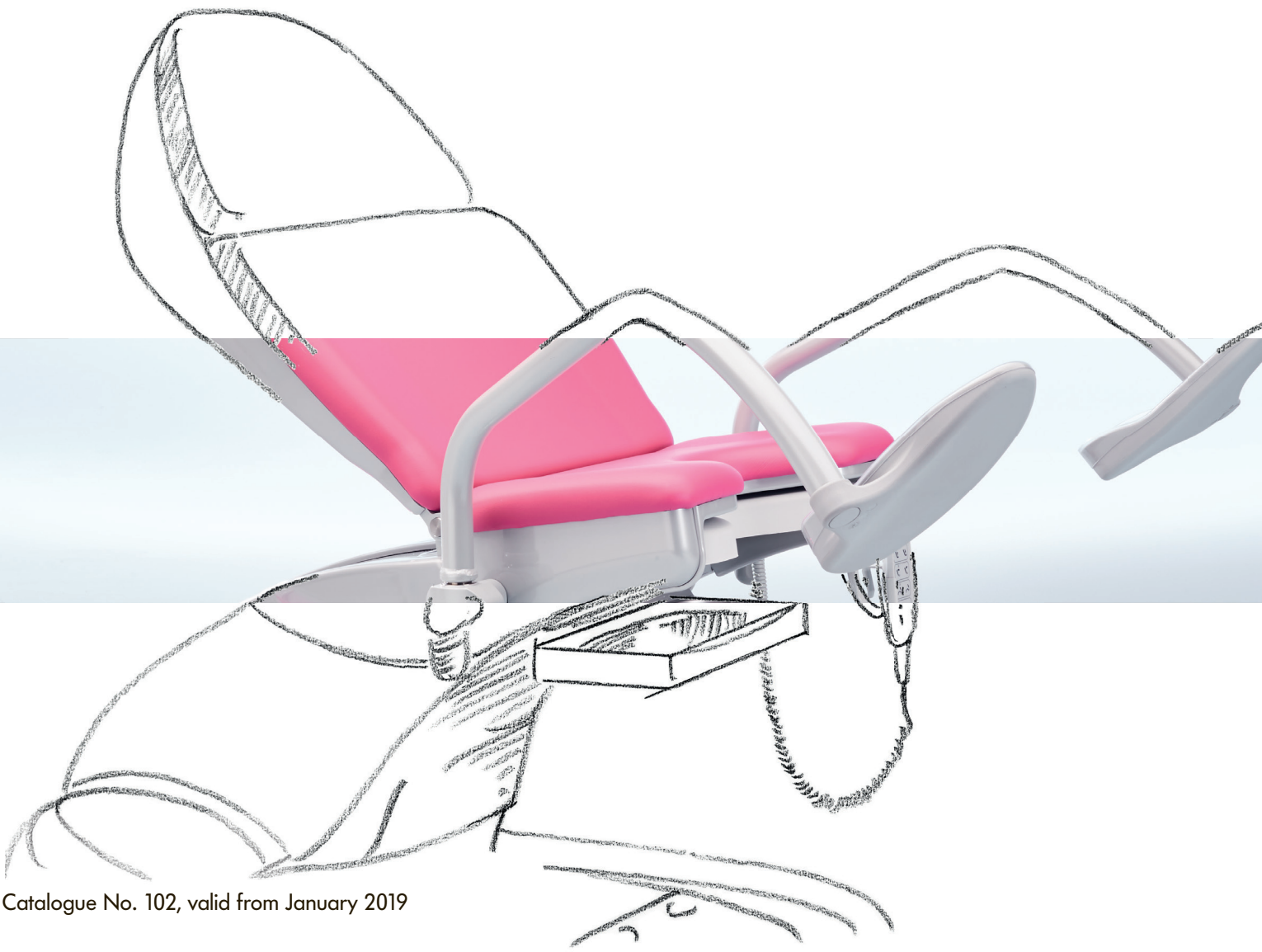




arco-matic® – The new generation of gynaecological examination chairs



arco-matic®

Optimised use, high level of comfort, first-class design

arco-matic®, the new series of gynaecological examination chairs, combines excellent design with state-of-the-art technology and great value for money.

Ergonomic

A width of upholstery of up to 685 mm at the back section and an individually adjustable head cushion attached magnetically to the chair offer patients pleasant and comfortable seating. With an access height of only 550 mm, even older or physically challenged patients can easily take a seat on the chair, and even at its lowest level, the seat position remains horizontal.

Strong

Designed for a working load of 250 kg, the chair offers great safety and many treatment options even for adipose patients.

Time-saving

Optimised adjustment speed and four freely selectable memory positions allow quick adjustment to the relevant position.

Functional

The backrest can be moved to a horizontal position; this means that patients can be positioned flat, e.g. for an ultrasound examination, or in a shock position in case of an emergency. The deep gyn. cut-out of 155 mm offers improved access to the examination area. Even if the patient is in a position of pelvic elevation, the rinsing basin stays horizontal.

Mobile

Concealed castors (optional) make the examination chair a mobile unit, enabling flexible use of the treatment area and room layout. The central locking mechanism allows fast and secure positioning.

Hygienic

Level, enclosed areas and the absence of corners and edges make for improved hygienic conditions and easy cleaning. Even the area under the arco-matic® can be cleaned thanks to its mobility (optional).

Made in Germany





With its versatile, colourful options and an award-winning design, arco-matic® leaves nothing to be desired and adds a visual highlight to the examination room.



reddot award 2017
winner

Illustration showing:
114.9700.0 with foot supports 101.0492.0, leatherette cover 101.0473.0, leg plate 101.0471.0, rinsing basin with convenient holder 101.0495.0, LED ambient illumination 101.0487.0 and colour panel 101.0488.0.

arco-matic® colours:
Upholstery raspberry 103
Plastic elements silver grey

arco-matic® combined with Orbit

A clear design concept for gynaecological surgeries



Whether it's the low access height, making it easier for patients to take their seat, the memory function allowing a quick adjustment to the relevant position or the deep gyn. cut-out, which facilitates the examination - arco-matic® is designed for the special requirements of daily medical practice.

arco-matic® is perfectly supplemented by Orbit - the modular supply and disposal concept for gynaecological workplaces, which can be adjusted to every set-up. arco-matic® thus forms part of a particularly functional furnishing concept that is available in many attractive colour schemes.

For further information on our Orbit range, please see our catalogue no. 75 or our website.



Colours in the illustration:
arco-matic®:
upholstery raspberry red 103
plastic elements silver grey

Swivel stool:
upholstery raspberry 103

Orbit:
Cabinet bodies white aluminium RAL 9006
Front panels heather violet RAL 4003
Bar handles semicircular white aluminium RAL 9006
Plastic elements silver grey

arco-matic® for gynaecology CE



Description

arco-matic® 200 M 114.9600.0

Examination and treatment chair, with memory function for four positions, pelvic elevation and back section adjustable by electromotor, seat height adjustable from 550 mm to 1000 mm by pelvic elevation. Adjustment and memory functions activated by hand and foot control.

arco-matic® 300 M 114.9700.0

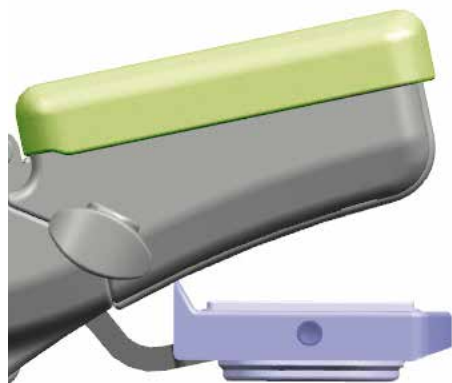
Examination and treatment chair, with memory function for four positions, pelvic elevation, back section and **foot supports (accessory) adjustable by electromotor**, seat height adjustable from 550 mm to 1000 mm by pelvic elevation. Adjustment and memory functions activated by hand and foot control.



114.9600.0 and 114.9700.0

Attention!

All basic types without leg positioning system, please choose from three options! (page 8/9)



Chrome nickel steel rinsing basin, in plastic frame, fixed in position with swinging mechanism

Hand and foot control



- Flexible positioning of the detachable foot control for a stress-free and comfortable working environment
- Saves and retrieves up to 4 memory positions
- Soft start-up of the chair movements
- Control of all motion sequences through foot and hand controls

Standard equipment:

Ergonomic upholstery on seat, back rest and head rest, SST rinsing basin, in plastic frame, fixed in position with swinging mechanism, detachable, 325 x 175 x 65 mm (W x D x H) 2.5 l volume. Magazine for holding paper roll of 400 or 500 mm width, max. diam. 140 mm, possibility to cover either the back and seat section or only the seat section with paper. With hand and foot control, base plate with 4 levelling screws, silver grey plastic cladding. Upholstery according to colour chart. Foot support mounts for quick removal or individual swivelling on a horizontal level of foot supports or Göpel-type leg supports with integrated handles (not available for equipment with side rails).

Connection cable 3 m with mains plug. Connection: 100 - 240 V, 50/60 Hz, max. 0.94 kW. Country-specific versions on request.

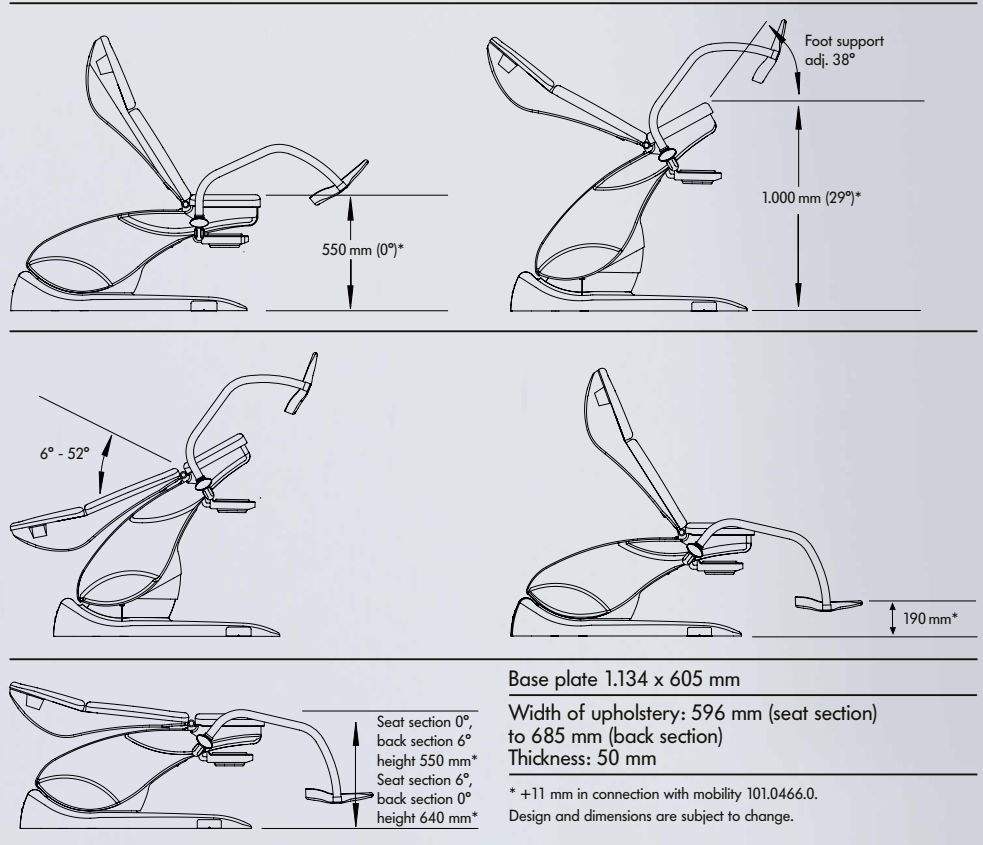
Net weight approx. 96 kg (Model no. 114.9600.0)
 Net weight approx. 100 kg (Model no. 114.9700.0)

Safe working load: 250 kg

Powder coated finish:

High quality powder coating in RAL 9006 white aluminium. Gloss finish, extremely knock and scratch resistant. Easy to clean, resistant to disinfectants and environ-

Positionings, Dimensions:



mental conditions.

Upholstery:

Foam material on support plate, with first-class, hard-wearing leatherette coverings. Colours available as per SCHMITZ colour chart in 4 colours in "classic" quality and in

18 colours in "comfort" quality.

When ordering:

Please state the following when ordering a chair from the arco-matic® series: Upholstery colour see colour chart.



Pelvic elevation
 114.9600.0 and 114.9700.0



Back section adjustment
 114.9600.0 and 114.9700.0



Electromotive adjustment of foot supports
 114.9700.0

arco-matic®

Leg support systems

1

Foot supports (pair) 101.0492.0

with integrated handles, powder coated RAL 9006 white aluminium, can be swivelled to the side, lockable. Plastic covers of transparent material as protection for the foot supports.

2

Leg supports, Göpel type, with integrated handle (pair) 101.0493.0

with integrated handles, powder coated RAL 9006 white aluminium. Leg supports with integral foam upholstery in silver grey, including fastening strap, rod of stainless steel 18/10.

3

Göpel leg support (piece) 101.0459.0

integral foam upholstery in silver grey, including fastening strap, rod of stainless steel 18/10, without attachment clamp (requires side rails 101.0463.0 and 101.1670.0 attachment clamps).

Side rails (pair) 101.0463.0

for the seat section, stainless steel 18/10, 25 x 10 mm, 290 mm long.

Attachment clamp (piece) 101.1670.0

revolving, stainless steel 18/10, for installation on side rails.



1

101.0492.0



2

101.0493.0



3

101.0459.0, 101.0463.0 and 101.1670.0

arco-matic® Accessories

1
Leatherette cover (pair) 101.0473.0
for integrated handles of foot supports,
according to colour chart, with zip fastener.

2
Leatherette cover (pair) 101.0474.0
for integrated handles of Göpel-type leg supports,
according to colour chart, with zip fastener.

3
Cushion 101.0472.1
leatherette cover according to colour chart.

4
Protective covers (pair) 101.0475.0
of transparent plastic material, for foot supports.

5
Paper roll 101.0489.0
500 mm wide, for integrated storage space.

Protective cover 101.0477.0
(upon request)
for seat section.
(w/o ill.)

6
Rinsing basin with convenient holder 101.0495.0
to maintain horizontal position; basin made of chrome
nickel steel with plastic frame 325 x 175 x 65 mm
(W x L x H), 2.5 litre volume.





6

101.0464.0



7

101.0482.0 and 101.0481.0



9

1101.0487.0 and 101.0488.0



8

101.0494.0



10

101.0469.0



11

101.0466.0

7

Side rail (piece) 101.0464.0

for the seat section, stainless steel 18/10, 25 x 10 mm, 150 mm long.

8

2 Power sockets 101.0482.0

acc. to EN 60601-1.

(subsequent fitting not possible)

2 Power sockets 101.0483.0

similar to 101.0482.0, but „Swiss type“ socket.

(subsequent fitting not possible)

(w/o ill.)

Socket for potential equalisation

101.0481.0

9

Colposcope support 101.0494.0

for Leisegang, Leica, Kaps and Zeiss systems, RHS or LHS fitting, powder coated in RAL 9006 white aluminium. For Kaps and Zeiss systems, please order required mounting tube with attachment from your colposcope supplier.

(w/o colposcope)

10

LED Ambient illumination 101.0487.0

(upon request)

LED illumination on both sides above the colour panel, choice of 13 different colours, interchangeable thanks to a switch under the colour panels, tone-in-tone colour shade already adapted to the selected pad colour (white LED for brown, black and grey pads).

Colour panel 101.0488.0

in line with colour of pads.

11

Doctor's foot support 101.0469.0

LH mounting, patient's POV.

Doctor's foot support 101.0468.0

RH mounting, patient's POV.

(w/o ill.)

12

Mobility 101.0466.0

2 swivel-type double castors, Ø 75 mm, 4 fixed-type castors Ø 50 mm, electrically conductive, with central lock (retrofittable).

Note:

Must not be used for patient transport!

Central lock

arco-matic® Accessories

1

Leg plate 101.0471.0

integrated into the seat frame, extractable, padded surface of soft-touch plastics (TPE), grey. Safe working load: 50 kg. Dimensions of pad: 480 x 373 x 30 mm (W x L x H).

2

Arm rest 101.0019.0

covered foam pad, antistatic, 450 mm long, with arm strap and attachment clamp, horizontally and vertically adjustable, tiltable via ball-and-socket joint, stainless steel.

3

Side rails for back section (pair) 101.0465.0

stainless steel 18/10, 25 x 10 mm, at the back section, for attaching accessories, 400 mm long.



Horizontal positioning with leg plate

101.0471.0



1

101.0471.0



2

101.0019.0



3

101.0465.0

Design example

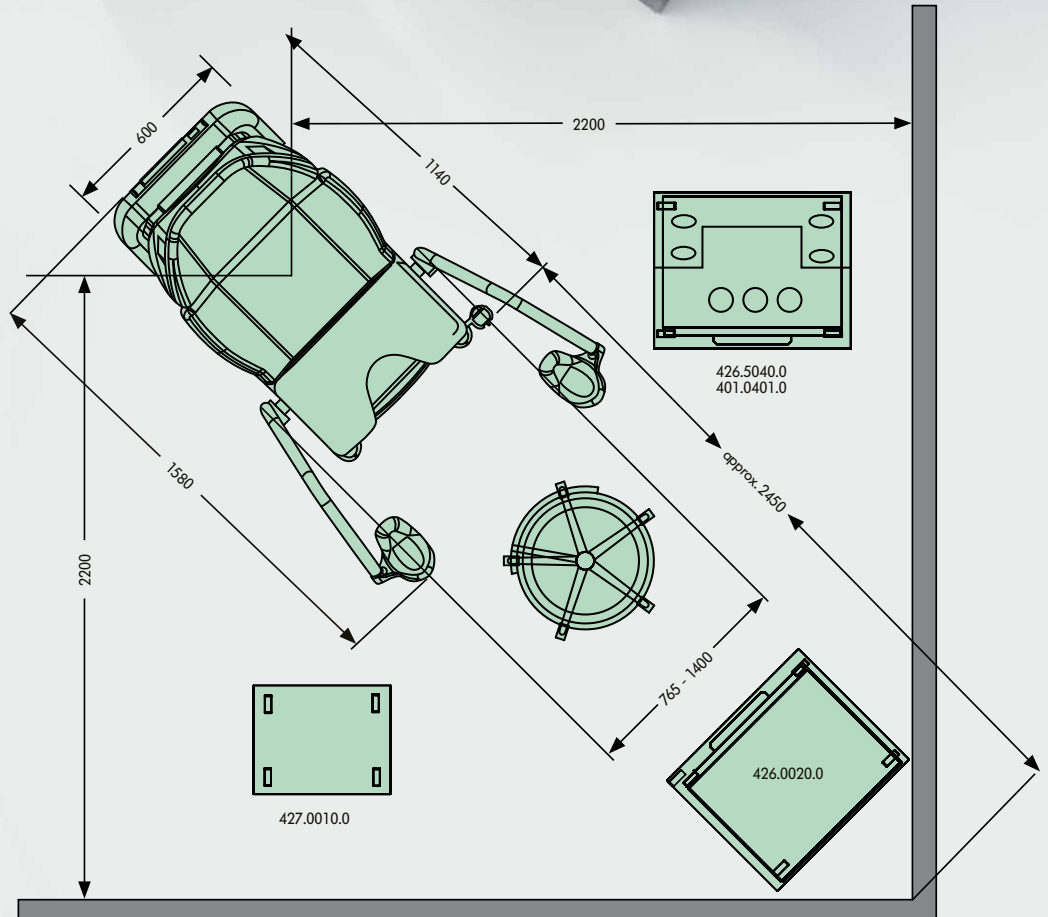


Illustrated colours:

arco:
 Upholstery lime 99
 Plastic enamel coating white aluminium RAL 9006
 Plastic elements silver grey

Examination seat:
 Upholstery lime 99

Orbit:
 Cabinet bodies white aluminium RAL 9006
 Front panels leaf green RAL 1206050
 Handles semicircular lemon green RAL 1008060
 Plastic elements silver grey



Online colour configurator: You choose the colour



Leatherette comfort



Leatherette classic



Selected colours:

Upholstery:
raspberry 103
Plastic elements:
silver-grey

Please note that due to individual monitor / graphics card settings the colours shown in our colour configurator may not match the real colours. We can therefore not assume any liability for their being correctly displayed.
The illustration shows model ref. 114.9700.0 with foot supports ref. 101.0492.0, leatherette covers 101.0473.0, leg plate 101.0471.01, rinsing basin with convenient holder 101.0495.0 and colour panel 101.0488.0.

Discover new, colourful worlds

With the SCHMITZ online colour configurator, you can try out various colour combinations and consider them at your leisure.

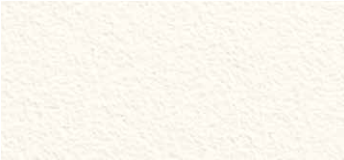
With a total of 22 upholstery colours, you have many options to create colourful highlights in your surgery.

Whether muted or cheerful, classic or modern, elegant or extravagant - with our tool, you will certainly find the right colour for you in no time at all.

Be inspired:
www.schmitz-soehne.com

Colours for upholsteries and plastic elements

Leatherette comfort



blossom white 84



gold yellow 86



mandarin 98



red carmine 92



raspberry 103



caribbean blue 82



atlantic blue 83



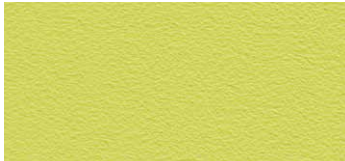
topaz 105



opal green 100



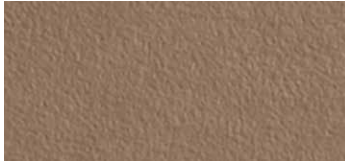
apple green 94



lime 99



milky coffee 102



natural brown 93



hazelnut 104



sand beige 101



stone grey 96

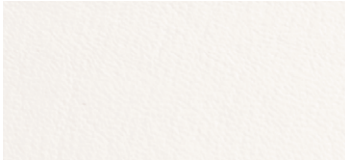


shale grey 97

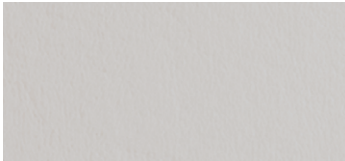


titan grey 91

Leatherette classic



white 53



silver-grey 55



ocean 52



black 57

Plastic elements



silver-grey

We recommend:
Special cleaner for leatherette
Model no. 2019878
 500 ml spray bottle.
 (packaging unit 3 bottles)

Cleaning set for leatherette
Model no. 2026973
 1 x 500 ml spray bottle and a brush.

Please refer to our separate operating manual for upholsteries for detailed information on cleaning and disinfection of upholsteries.



SCHMITZ

A SENSE OF CONFIDENCE

SCHMITZ u. Söhne GmbH & Co. KG

P. O. Box 14 61
58734 Wickede (Ruhr)
Germany (postal address)
Zum Ostenfeld 29
58739 Wickede (Ruhr)
Germany (visiting address)
T +49 (0)2377 84 0
F +49 (0)2377 84 135
www.schmitz-soehne.com
export@schmitz-soehne.de

Technical service, hotline:
T +49 (0)2377 84 549
F +49 (0)2377 84 210
service@schmitz-soehne.de

All articles including correspond-
ing accessories marked with
the CE label meet the standards
for medical devices acc. to
MPG and the EC regulation
93/42/EEC.



The products may only be used
for their intended purpose of use.
Please also observe our operating
manual!

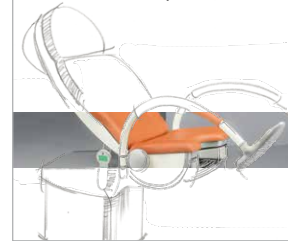


[f/schmitz.soehne](https://www.facebook.com/schmitz.soehne)



**Information on
our establishments
worldwide can be found
on our website.**

Gynaecology, Urology
and Proctology
The perfect equipment
to meet all requirements



vidan²
The Full HD Video Colposcope



varimed[®]
Medical Furniture
for Examination
and Treatment Areas



Partura[®]
The SCHMITZ delivery table
for a safe and gentle birth



Our goods and services are to be understood ex works. Deliveries are effected via our authorized partners or branch offices. The company reserves the right to alter the design, construction, dimensions and finish of its products without notice. All relevant dimensions and weights are to be understood as approximate information/data. Due to technical reasons colour deviations are possible. The articles shown in this catalogue are not authorized for sale in the United States. SCHMITZ Catalogue No. 102, 01.2019 GB
Nominal charge 3.00 Euro.